

Product Specification.

marble

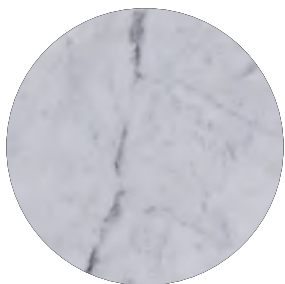


Marble

Traditionally the term Marble was used by stone masons to describe any stone that would take a polished finish. From a geological point of view however, Marble is defined as Limestone which has been subjected to thermal metamorphism. This process of metamorphism leads to a dense, closed surface although some material may have slight open veining or surface pitting.

Marble has been used in ancient buildings for millennia due to the vast spectrum of beautiful shades and mineral veining. Some Marble tiles or slabs with particularly prominent veining may have a mesh backing applied to the rear of the tile, predominantly to reinforce the material during transport and cutting. It is also common practice for resin filler to be applied to voids and open veins either before or after processing.

Marble is a very dense stone that readily lends itself to a polish but is also available in Honed and Tumbled finishes.



HONED



DISTRESSED

Bianco Carrara

Size

305 X 305 X 10MM
 610 X 305 X 10MM
 610 X 610 X 10MM
 610 X 406 X 12MM
 610 X 406 X 30MM
 SLABS ON REQUEST

Finish

HONED/POLISHED
 HONED/POLISHED
 HONED/POLISHED
 DISTRESSED
 DISTRESSED
 VARIOUS

Slip

P2
 P2
 P2
 P5
 P5

Coping Tiles

— BULLNOSE 610 X 406 X 30MM
 ┌ SQUARE DROP 610 X 406 X 30/50MM

Finish

DISTRESSED
 DISTRESSED

Slip

P5
 P5





Calacatta

Size

610 X 610 X 12MM
610 X 305 X 10MM
610 X 610 X 10MM
SLABS ON REQUEST

Finish

POLISHED
POLISHED/HONED
POLISHED/HONED
VARIOUS

Slip

P1
P3
P3



Naturella

Size

610 X 610 X 15MM
610 X 610 X 15MM
610 X 610 X 15MM

Finish

ANTIQUE
HONED
POLISHED

Slip

P5
P3
P1



Nero Marquina

Size

305 X 305 X 10MM
610 X 305 X 10MM
610 X 610 X 15MM
SLABS ON REQUEST

Finish

POLISHED/HONED
POLISHED/HONED
POLISHED/HONED
VARIOUS

Slip

P3
P3
P3



Marron Emprador

Size

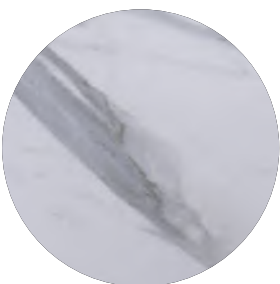
610 X 305 X 10MM
610 X 610 X 10MM

Finish

POLISHED/HONED
POLISHED/HONED

Slip

P3
P3



Statuario

Size

610 X 305 X 10MM
610 X 610 X 10MM

Finish

POLISHED/HONED
POLISHED/HONED

Slip

P3
P3





Crema Marfil

Size

305 X 305 X 10MM
610 X 305 X 10MM
610 X 610 X 12MM
SLABS ON REQUEST

Finish

HONED/POLISHED
HONED/POLISHED
HONED/POLISHED
VARIOUS

Slip

P2

P2

P2



Santorini

Size

610 X 305 X 10MM
610 X 610 X 10MM

Finish

HONED
HONED

Slip

P3

P3



Dark Green

Size

610 X 305 X 10MM
610 X 610 X 10MM

Finish

POLISHED
POLISHED

Slip

P3

P3



Elba

Size

610 X 305 X 10MM
610 X 610 X 10MM

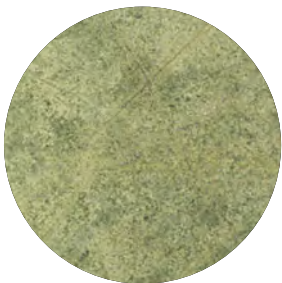
Finish

POLISHED/HONED
POLISHED/HONED

Slip

P3

P3



Forest Green

Size

610 X 305 X 10MM
610 X 610 X 10MM

Finish

POLISHED/HONED
POLISHED/HONED

Slip

P3

P3



Forest Brown

Size

610 X 305 X 10MM
610 X 610 X 10MM

Finish

POLISHED/HONED
POLISHED/HONED

Slip

P3

P3





Leila Beige

Size

610 X 305 X 10MM
610 X 610 X 10MM

Finish

POLISHED/HONED
POLISHED/HONED

Slip

P3
P3



Super White

Size

600 X 300 X 20MM
600 X 600 X 20MM
800 X 400 X 20MM
1220 X 610 X 12MM
SLABS ON REQUEST

Finish

POLISHED/HONED
POLISHED/HONED
POLISHED/HONED
POLISHED/HONED
VARIOUS

Slip

P3
P3
P3
P3

All tips and guidelines should be taken as general advice and should be used in addition to the relevant Australian standards. These tips and advice are given in good faith. In no way do these replace the service of professional contractors / consultants.

Installation tips.

Before installation

Stone tiles are often packed into crates very tightly, are wet at the point of production and may have some residue from the various finishing processes used. Because of this it is recommended that stone tiles are washed and are allowed to dry completely before every stage of the installation process. They will often lighten in colour as they dry.

It is necessary tiles are dry prior to installation. Dry tiles will show any unusual tonal markings which will indicate where tiles should be placed. At the point of installation always ensure that stone tiles are mixed to ensure an even and consistent distribution of varying patterns. This will mean opening all crates or pallets of materials supplied.

Minor damage such as edge chipping is often caused in packing or unpacking tiles, and should be expected. It is deemed normal practice for these to be used as cuts during the installation.

Stone tiles need to be graded prior to installation; the thicker tiles will dictate the nonlevel and should be installed first. Thinner tiles should be bedded with an appropriate adhesive.

Slight variations in size and thickness can occur with most stones and are deemed acceptable characteristics. All stones should be clean, dry, and free of dust, grease and any loose material before installation.

Make sure that you have discussed your requirements fully with your installer and that they are familiar with the product that is to be fixed.

Please note: All stone should be inspected prior to installation. Stone will have natural occurring variations in colour, texture, chipping and surface finishes. It is these imperfections that make the product unique.

Any tile with excessive chipping, sizing and variation may be subject to a warranty claim. This needs to be done before installation.

Adhesion

All Stone tiles must be solidly bedded, with 100% adhesive coverage.

Tiles should occasionally be lifted during the laying process to ensure that sufficient compaction and full bed adhesion has been achieved.

We recommend Mapei or Laticrete products for the installation process (There are many reputable companies)

au.laticrete.com/

mapei.com/au

Fast setting adhesives are advisable to avoid issues with the moisture retention of some tiles.

Some tiles require the use of specific adhesives to ensure problem-free fixing; please speak to manufactures directly to discuss the requirements of your tile choice.

Light Coloured materials require fixing with white adhesives to prevent possible discoloration within the body of the stone. Flexible adhesives, combined with further substrate preparation, are required when the substrate is wood, or floor. For uncalibrated stone tiles, the appropriate Large Format

Floor Adhesive should be used to accommodate the variation in tile thickness and associated increases in the adhesive bedding. The variation in tile thickness will be most noticeable if laying a mix of sizes in an uncalibrated material.

Grouts

The purpose of grout is to help maintain the stones in their place, create a water tight seam that prevents liquid from seeping into the substrate/adhesive - to its best ability - and to minimise breakages from expansion and contraction.

When grouting it is always recommended to use a high-quality grouting compound that is suitable for the application. Grouting products can be found below.

au.laticrete.com/

mapei.com/au

Please speak to a professional when selecting the correct grout for colour, suitability and durability.

Substrates/foundations/ underfloor heating

The key to preventing problems occurring after tile installation is the correct preparation of the substrate prior to fixing. All substrates that are to be tiled on, floor or wall, should always be suitably prepared. They should be clean, flat, level, free from movement and free from anything which could be deleterious to adhesion.

Correct identification of the substrate is vital to ensure the correct advice and ancillaries are provided. With the increasing use of large format & Split face materials on walls, it is imperative to ensure that the substrate has a suitable weight bearing capability to accommodate the desired material.

For guidelines on fixing to specific substrates please call us for further information. We have a team dedicated in natural stone installations who can help contact the relevant professional (Engineer, architect, building consultant) to produce a work method statement to be specified for the correct substrate, foundations and underfloor heating.

All information required about the stone weight Per/m² can be obtained by contacting us directly.

Cutting

Stone is best cut with a bench saw with a diamond blade. The stone should be washed after cutting to remove all dirt and cutting paste.

Please note that silica dust can be found in natural products and is recommend that safety and health-cautions are used whilst cutting.

Storage

All stone is best stored in a dry area where it will not be affected by the weather. At the very least ensure coverage with a tarp.

Crystalline silica

Commonly known as silica dust this is found in sand, stone, concrete, mortar and variety of products in the construction industry including bricks and plastics. Silica dust particles if exposed can cause health issues.

To prevent and reduce this protective equipment must be worn whilst using tools to cut, grind, drill or other any other procedures that involve manipulating the stone. Safety guidelines relating to silica must be obeyed. For more information, please see the link below.

safeworkaustralia.gov.au/safety-topic/hazards/crystalline-silica-and-silicosis

Sealing

It is crucial to understand that no two pieces are the same when sealing natural stone. Some natural stones are more porous than others, some tend to stain easier, and some manage just fine. When sealing natural stone, it's an industry recommendation that you seal everything on initial application. Doing so will allow you to keep your stone looking beautiful, avoid damages and will allow easier maintenance and cleaning.

Sealing stone can be done by yourself or by a hired professional. The advantage of hiring a professional is the convenience of professional application, cleaning, and preparation. If the job is quite small and you're handy with the tools with the right guidance you should seal it yourself. Please consult our sales staff or accredited sealing companies for a specified sealing system.

Range of sealers to use:

We highly recommend sealing all natural stones to protect and retain its natural beauty for years to come. We recommend using high quality sealers such as Environex, Aqua mix or Dry Treat.

Please note: We provide these recommendations as a service only and will not be responsible for any sealer claims.

- **Aqua Mix**

aquamix.com.au/products/sealers/natural-look-sealers/

- **Environex**

environex.net.au/stonecare/products/sealer-product-selector/ • **Overseal:**

Anti slip treatments

If the desired slip rating cannot be achieved using the product you have selected, you can perform an anti-slip treatment. Please contact RMS or the below companies for more information.

devstonesolutions.com.au/anti-slip

griptek.com.au

Maintenance and cleaning.

Like any surface, stone will require a degree of maintenance. The correct sealing from the start is the key to minimal maintenance.

Heavily tracked areas will require more maintenance than those that are seldom used. The main maintenance regime required for stone is regular sweeping and vacuuming. In addition, the floor should be mopped regularly with a neutral routine cleaner formulated specifically for use with all tiles and natural stone products.

The use of abrasive, acidic or alkali household detergents should be avoided as they can remove the tiles surface sealant or in extreme cases damage stone or porcelain.

Please note: acidic cleaners should not be used, unless professionally recommended.

Always use accredited sealers and cleaners:

- **Aqua Mix**

aquamix.com.au/products/cleaners/

- **Environex**

environex.net.au/stonecare/products/cleaning-product-selector/



naturalstonetiles.com.au

Richmond
Hoppers Crossing
Geelong

(03) 9121 8888
(03) 9748 7788
(03) 5261 7777

591 Bridge Rd, Richmond
6 Nevada Crt, Hoppers Crossing
6/1135 Surf Coast Hwy, Mt Duneed